

**Introduction**

Thank you for purchasing the AE5511 TrafficTesterPro. This Startup Manual explains the operations that you carry out for the first time you use the AE5511 TrafficTesterPro. The following three manuals including this manual are available for the AE5511. Please read all of them.

Manual Title	Manual No.	Description
AE5511 TrafficTesterPro User's manual (Windows Version)	IM417322900-01E	Explains all functions and procedures of the AE5511 excluding the communication functions.
AE5511 TrafficTesterPro Startup Manual	IM417322900-02E	This manual. Explains the procedures for setting up the AE5511 so that it can be accessed.
AE5511 TrafficTesterPro Remote Command Manual	IM417322900-17E	Explains automatic measurement using the communication function (remote control function) of the AE5511 and commands.

**Safety Precautions**

- Before connecting the power cord, ensure that the source voltage matches the rated supply voltage of the instrument and that it is within the maximum rated voltage of the provided power cord.
- To prevent the possibility of electric shock or fire, be sure to use the power cord supplied by YOKOGAWA. The main power plug must be plugged into an outlet with a protective earth terminal. Do not disable this protection by using an extension cord without protective earth grounding.
- Make sure to connect the protective earth to prevent electric shock before turning ON the power.
- Make sure to check that the protection function provided by the instrument is working properly before operation.
- Do not operate the instrument in the presence of flammable liquids or vapors. Operation in such an environment constitutes a safety hazard.
- The cover should be removed by YOKOGAWA's qualified personnel only. Opening the cover is dangerous, because some areas inside the instrument have high voltages.

**Trademarks**

- Windows, HyperTerminal, and .NET Framework are either registered trademarks or trademarks of Microsoft Corporation in the United States and/or other countries.
- Linux is either a registered trademark or trademark of Linus Torvalds in the United States and/or other countries.
- Adobe, Acrobat, and Acrobat Reader are trademarks or registered trademarks of Adobe Systems Incorporated.
- For purposes of this manual, the TM and ® symbols do not accompany their respective trademark names or registered trademark names.
- Other company and product names are trademarks or registered trademarks of their respective holders.

1st Edition: July 2005 (YK)

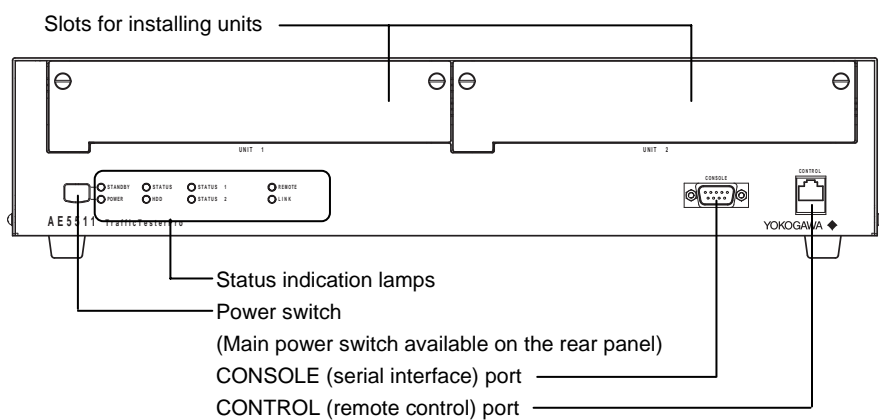
All Rights Reserved, Copyright © 2005, Yokogawa Electric Corporation



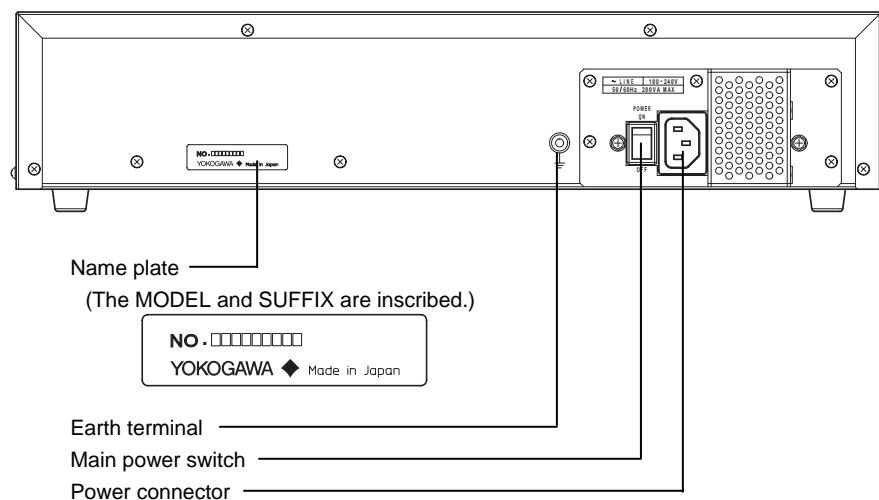
IM 417322900-02E  
1st Edition

**Names of Parts**

**• Front Panel**



**• Rear Panel**

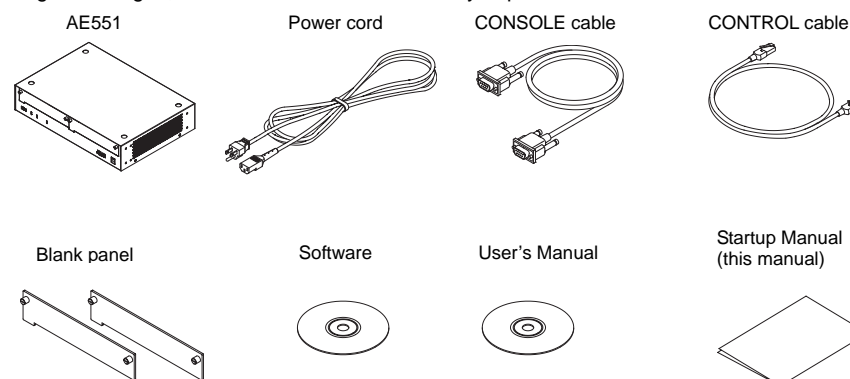


**CAUTION**

- Install or remove the unit with the main power of the AE5511 turned OFF (STANDBY LED: OFF and POWER LED: OFF). Otherwise, malfunction may result.
- Attach blank panels to unused AE5511 slots to prevent accidents.

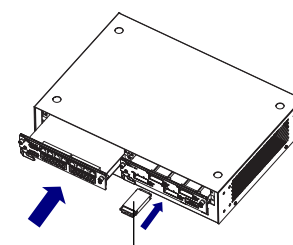
**Checking the Contents of the Package**

Check the items below before use. If some of the contents are not correct, or if any items are missing or damaged, contact the dealer from whom you purchased them.



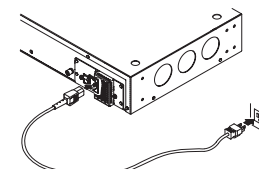
Name	Qty.	Notes
AE5511	1	
Power cord	1	One of the selected power cords below is provided. UL, CSA standard power cord VDE standard power cord AS standard power cord BS standard power cord GB standard power cord (CCC-compatible)
CONSOLE cable	1	RS-232 cable, cross, 1.5 m. Complies with EIA-574
CONTROL cable	1	LAN cable, cross, 1.5 m
Blank panel	2	Attached to the AE5511
Software	1	CD (part No.: M3400KL) • AE5511 TTPro Control WindowE Application CD
User's manual	1	CD (part No.: M3939MB) • AE5511 TrafficTesterPro User's manual (Windows Version) • AE5511 TrafficTesterPro Remote Command Manual • AE5511 TrafficTesterPro User's Manual (Web Version): AS-84711-1EY • AE5511 TrafficTesterPro User's Manual (Auto Test Supplement): AS-84711-1EY
User's manual (this manual)	1	AE5511 TrafficTesterPro Startup Manual

**Installing the Unit**



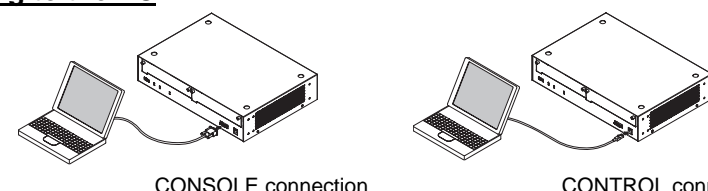
1. Align the unit with the slot guide of the AE5511 and insert it slowly toward the back of the AE5511.
2. Press the panel section of the unit with your thumbs until the connectors on the unit and AE5511 engage.
3. Fasten the two attachment screws of the unit to fix the unit in place.
4. On the AE5521 to AE5524, also install the interface module.

**Connecting the Power Supply**



1. Check that the main power switch on the rear panel is OFF.
2. Connect the power cord plug to the power connector on the rear panel. (Use the power cord that comes with the package.)
3. Connect the plug on the other end of the cord to a three-prong outlet with a protective earth terminal.

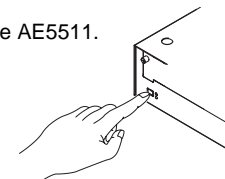
**Connecting to the PC**



1. Check that the PC and the AE5511 are turned OFF, and connect the PC's serial port to the AE5511 CONSOLE port.
2. Connect the PC's LAN port to the AE5511 CONTROL port using the LAN cable that comes with the package. If you are using a LAN cable sold commercially, connect the ports via a network device such as a hub or router.
3. Turn ON the power switch on the PC and the rear panel of the AE5511.
4. Turn ON the power switch on the front panel of the AE5511.

**Note**

The CONSOLE connection is used to configure the AE5511 network, and the CONTROL connection is used to control the AE5511.



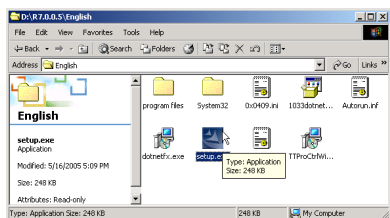
## Setting Up the Application (Installation and Upgrading from the AE5511 CGI Version)

### System Requirements

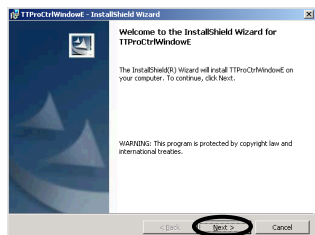
- PC: Windows PC
- OS: Windows 2000 SP3 or SP4 or Windows XP SP1 or SP2
- CPU: Pentium III 1.2 GHz or faster
- Memory: 512 MB or more
- Hard disk: Free space of 200 MB or more (300 MB or more recommended)
- Disk drive: CD-ROM drive

### Installing the Application

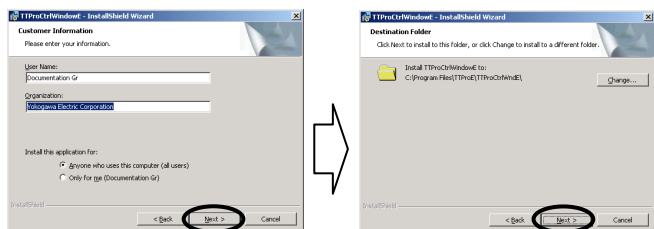
1. Log on to Windows with administrator privileges.
2. Load the software CD-ROM (TTPro Control WindowE) into the CD-ROM drive.
3. Double-click **My Computer**, and double-click the CD-ROM icon. The CD-ROM dialog box opens.
4. Double-click setup.exe on the CD-ROM. TTProControlWindowE setup dialog box opens.



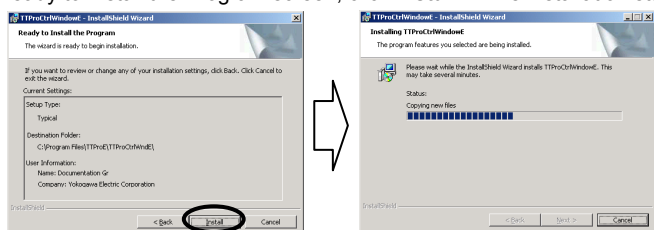
5. Click **Next**.



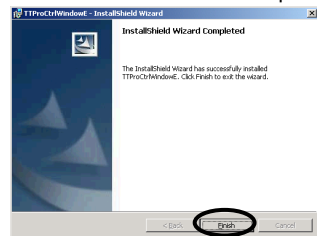
6. Set the **Customer Information** and **Destination Folder**. Click **Next** on each screen.



7. On the Ready to Install the Program screen, click **Install**. The installation starts.

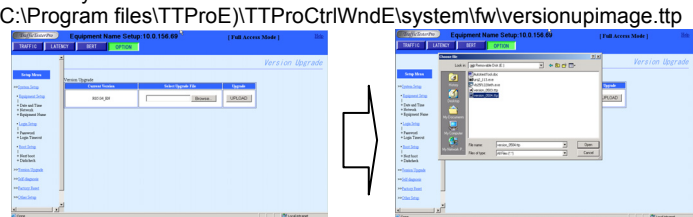


8. A message indicating that the installation has been completed appears. Click **Finish**.



### Upgrading the AE5511 from the CGI Version (R05.\*\*\*) to the TTProControlWindowE Version

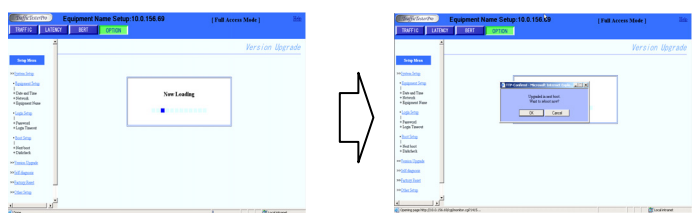
1. Install TTProControlWindowE to your PC. For details, see "Installing the Application" in the previous section.
2. Log into the AE5511. Use the browser on your PC and log in using Full Access mode.
3. From the **OPTION** screen, choose **Version Upgrade**. The Version Upgrade screen appears.
4. Click **Browse**. The Choose file dialog box opens.
5. Select the file to be installed. The file is located under the directory shown below. The path inside the parentheses is what is displayed if the TTProControlWindowE was installed to the default directory.  
(C:\Program files\TTProE)\TTProCtrlWndE\system\fw\versionupimage.ttp



Version Upgrade screen

Choose file dialog box

6. Click **Open**. A dialog box containing the message "Setup parameters may be lost. Want to upgrade now?" opens.
7. Click **OK** to start the upgrade operation. When the upgrade operation is complete, restart the AE5511.



### Note

- The STATUS lamp on the AE5511 blinks while the upgrade operation is in progress. The STATUS lamp illuminates when the operation is complete.
- After upgrading, the network settings are reset to default values. Reconfigure them as necessary.
- You cannot log into the AE5511 using a browser after it has been upgraded.
- If the CGI version is R04.\*\* or earlier, upgrade to R05.\*\* first, and then upgrade to the TTProControlWindowE version.
- TTProControlWindowE checks whether your PC is compatible with .NET Framework at the time of installation. If not, an installation screen automatically appears. To continue with the installation, select **I agree** and click **Install**.

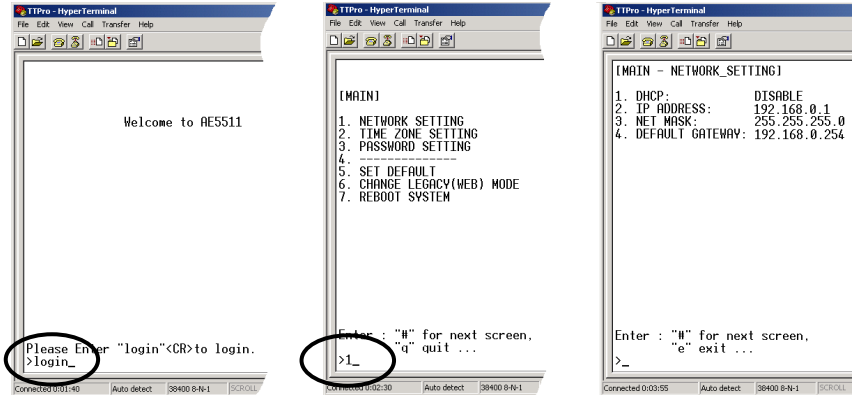
## Configuring the AE5511 Network Settings

### Configuring the AE5511 Network Settings Using the HyperTerminal on the PC

1. On the taskbar, click the Windows **Start** button, point to **All Programs > Accessories > Communications**, and click **HyperTerminal**. HyperTerminal starts. If you start HyperTerminal for the first time, a location information dialog box opens.
2. Specify the **country/region**, **area code (or city code)**, **number to access an outside line**, and **phone system** and click **OK**.
3. Check the country/region information on the **General** tab and click **OK**.
4. Assign a name for the new connection and click **OK**. (Example: AE5511)
5. Select the port to be used on the PC (example: COM1) and click **OK**. A Properties dialog box of the selected port opens.
6. Set the parameters as shown below and click **OK**. A HyperTerminal window opens.
  - Bits per second: 38400
  - Data bits: 8
  - Parity: None
  - Stop bits: 1
  - Flow control: Xon/Xoff
7. Type **login** and press the **Enter** key. The MAIN menu appears.

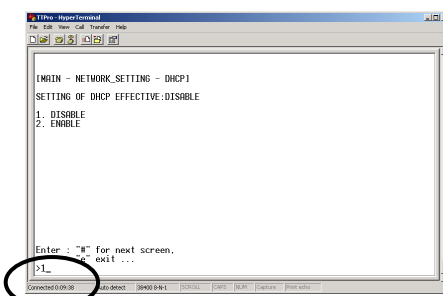
### Setting the Network (set appropriate values for your network)

8. Type **1** and press the **Enter** key. The NETWORK\_SETTING menu appears.



### Setting DHCP

9. Type **1** and press the **Enter** key.
10. Select **DISABLE** or **ENABLE** and press the **Enter** key.

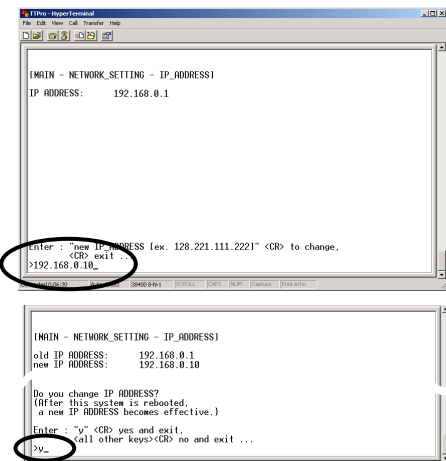


### Setting the Subnet Mask

9. Type **3** and press the **Enter** key.
10. Type a value and press the **Enter** key.

### Setting the IP Address

9. Type **2** and press the **Enter** key.
10. Type the address and press the **Enter** key. A confirmation message for changing the address appears.



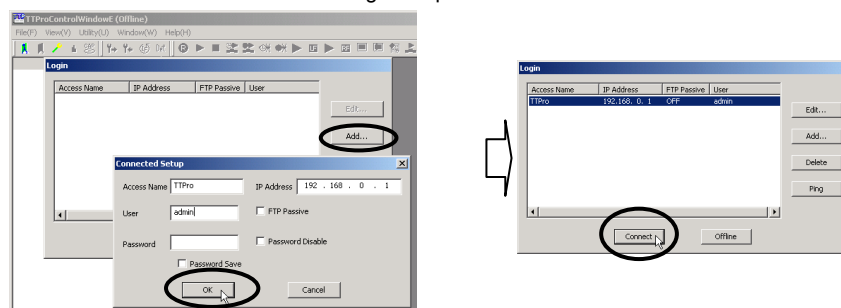
11. Type **y** and press the **Enter** key.

## Setting the Network Parameters of the PC

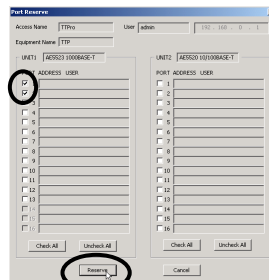
Set the PC's IP address and netmask. (Set an appropriate value for you network.)

## Starting the Application and Logging In

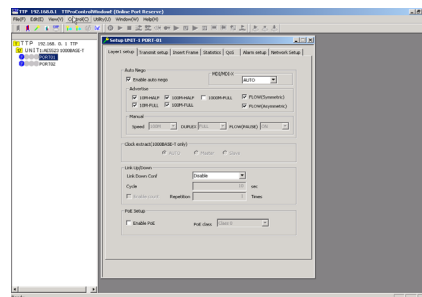
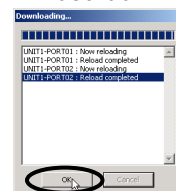
1. On the taskbar, click the Windows **Start** button, point to **All Programs**, point to **TTProControlWindowE**, and click **TTProControlWindowE**. The application starts and a Login dialog box opens.
2. Click **Add**. The Connected Setup dialog box opens.
3. Set the **Access Name**, **IP Address**, and **User**. (Example: **Access Name**: TTPro, **IP Address**: 192.168.0.1, and **User**: admin)
4. Click **OK**. The destination is registered.
5. Click **Connect**. The Port Reserve dialog box opens.



6. Select the unit port check boxes that are to be used for the measurement. (In the example below, ports 1 and 2 are selected.)
7. Click **Reserve**. The Downloading dialog box opens.



8. Click **OK**. The TTProControlWindowE opens.



TTProControlWindowE Window

9. For the subsequent procedure, see the *User's Manual (IM417322900-01E)*.